

Unhitched Ranch

Riverside County, California

\$2,875,000 | 35.64 Acres

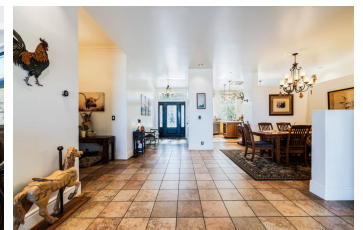
8411 Reche Canyon Road
 Colton, California

Best in Class equestrian facility fully fenced and cross-fenced with numerous turn-out areas. There is a beautiful 3,106 square foot home with four bedrooms and three baths that sits on 10.27 acres with the main equestrian headquarters, and there is a separate lot with 25.37 acres with upper and lower ranches.



PROPERTY HIGHLIGHTS

- 35.64 acre equestrian facility
- 3,106 square foot residence
- 10 stall barn with paddocks and turn out areas
- 120 x 300 foot lighted arena



LANCE DORE
 Real Estate Agent
 BRE# 00976180
 Cell: (619) 663-9925
lance@caoutdoorproperties.com