

# Constantia Ranch

Lassen County, California

\$10,999,999 | 4,872.24 Acres

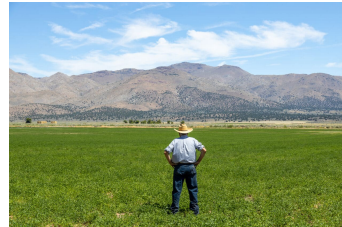
425-940 Constantia Road  
Doyle, California

Located just 40 minutes north of Reno, NV, right off Highway 395 in Lassen County lies the historic 4,872.24 ± acre Constantia Ranch. The ranch encompasses 1,325 ± irrigated acres and over 3,547 ± acres of dry pasture, making Constantia Ranch ideal for a turnkey high-yielding hay and livestock operation.



## PROPERTY HIGHLIGHTS

- Historic 4,800± ranch
- Productive agricultural property
- 1,325 irrigated acres
- 3,547± acres of dry pasture
- 12 center pivots, 1 lateral
- 6 AG wells with VFD's
- Alfalfa, corn, small grains, and teff hay crops
- Supports 100 pair of livestock over a 6 month season
- 4,072 SF main home with a 3 car garage
- Domestic Spring provides fresh water to homes



**SCOTT ULCH**  
Real Estate Agent  
BRE# 01382010

Office: (775) 424-1952  
Cell: (775) 240-3668  
[scottulch@sbcglobal.net](mailto:scottulch@sbcglobal.net)



**TODD RENFREW**  
Broker & Owner, ALC  
BRE# 01727574 &  
NV#B.1001686

Office: (707) 455-4444  
[Todd@caoutdoorproperties.com](mailto:Todd@caoutdoorproperties.com)