

3511 Grizzly Road

Plumas County, California

\$385,000 | 0.95 Acres

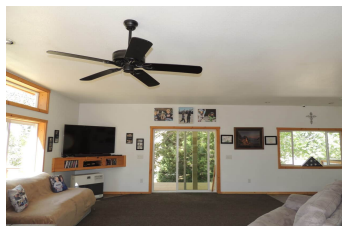
3511 Grizzly Road
Portola, California

This property offers the best of both worlds - comfortable, efficient main living, and a private additional space perfect for guests, extended family, or even rental income potential. With a total of 2 bedrooms, 2 sitting rooms, and 2.5 bathrooms across two living areas, this home is ideal for those looking for flexibility, privacy, and unique living options.



PROPERTY HIGHLIGHTS

- Bright and spacious single-level design
- Panoramic views and direct access to the National Forest with natural meadow
- Efficient heat sources and ceiling fans in both living areas
- Large Detached two car garage with ample shelving and storage
- Zoned for horses with hundreds of acres to ride out your back door
- Fully automatic generator system
- Paved driveway
- Shop and horse stalls
- RV electrical hookup and parking



PEGGI VERNON

Real Estate Agent
BRE# 02069320

Cell: (775) 225-8177
PeggiVernon@yahoo.com